

Fidex-FS

CT, DR, and Fluoroscopy - All In One Machine



Animage has released the 2017 model of the Fidex Full System, the *Fidex-FS*, the industry's foremost multi-modality X-ray CT scanner designed and built specifically for the veterinary community. *Fidex-FS* has three functions which are CT, DR and Fluoroscopy. Incorporating the latest technological advances in flat panel displays, the new dynamic large 17" x 17" panel generates superb studies and significantly improves performance.

Fidex-FS has a larger field of view in all three modalities, instantaneously converts to high quality DR, and allows full-size Fluoroscopy. The **FIDEX** combination of these modalities into one machine conserves valuable space, leverages financial resources, and increases your operational effectiveness. It is fast becoming *the* world-wide favorite.

Fidex-Classic will coexist with ***Fidex-FS***, and continue to provide an economical solution if only the CT and small field Fluoroscopy functions are preferred to the full system.

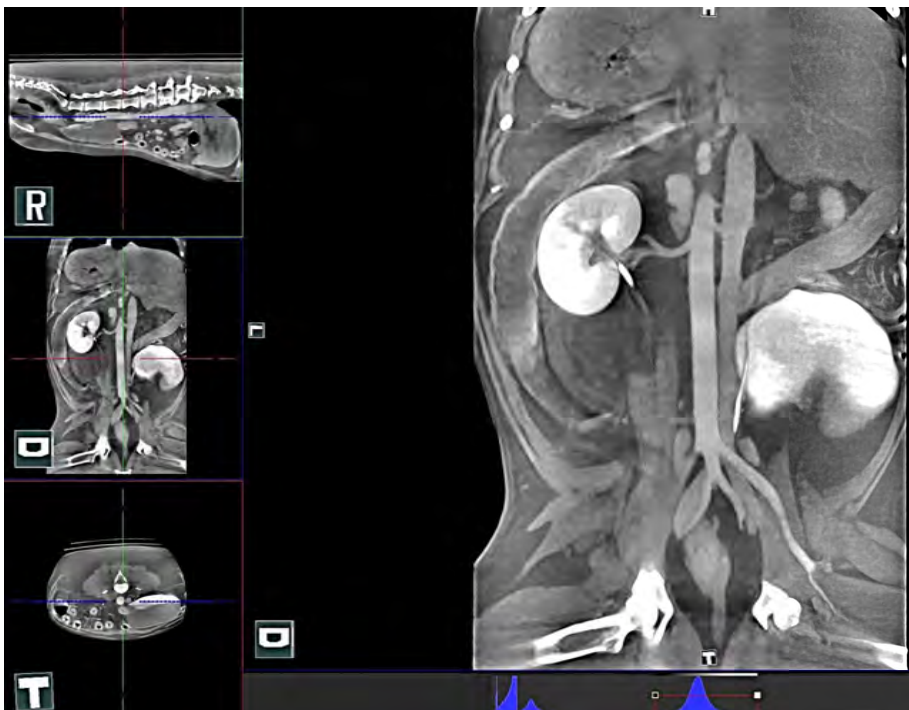


This combination of CT, DR, and FL into one machine creates unprecedented economies of space, leverages financial resources, and increases operational effectiveness. Because of this, **FIDEX** will place the benefits of the diagnostic power of CT into your hands thereby enabling better decision making during critical moments prior to taking action, saving both time and money while increasing the quality of care delivered.

The **FIDEX** solution delivers a proven imaging system without the need for additional power installation or room modifications. **FIDEX** is easy to operate and delivers superb value in total cost of ownership. **FIDEX** runs from a standard 110V or 220V wall outlet, requires no cooling beyond standard office temperature controls, has similar shielding parameters to standard radiography systems, and can easily fit through standard doors and hallways for ease of installation. **FIDEX** installs in as little as an hour and can be ready to operate within two hours. Rest assured your **FIDEX** will be fully supported through an available annual maintenance plan providing peace of mind for years to come.

Fidex Benefits

- ❖ Improved cash flow from both in-house and outside referrals into your practice leveraging the advanced diagnostic imaging capabilities
- ❖ Reduction or elimination of breathing artifacts within studies via the Animage ABC™ Breathing System
- ❖ Intuitive, easy to use software interface specifically designed for veterinary applications. Basic and Advanced modes fit various skill levels
- ❖ Numerous tissue filters and reconstruction algorithms without the need to rescan animal
- ❖ Numerous software tools that facilitate efficient work flow
- ❖ Full compliment of software tools with on screen annotations and measurements to increase work flow with captured details
- ❖ Easy patient access as a result of open c-arm design
- ❖ Ability for oblique, lateral, and standing radiographic studies



CT abdominal study with contrast.



CT nasal study volume rendering.

Simple Operation

The **FIDEX** GUI software was written from the ground up for veterinary clinics. The basic mode, which provides default settings, enables a first time user to produce high quality images with confidence. Advanced users have access to additional controls with a single mouse click.

FIDEX is all about ease of use and ergonomics. The C-arm design provides open access to the patient from both sides of the scanner for easy positioning and preparation. An optional large full floating DR table provides more working room, especially for larger animals. The boom arm with monitor (standard with FL) can be rotated to any position for optimum visibility during intervention.



CT Volume rendering showing displacement of a dog's right lung by a large tumor, as well as calcification within the tumor, selectively omitting display of tumor tissue.

FIDEX Technology

Animage co-developed the patent pending ***Automated Breathing Control (ABC™) System***.

The ABC™ System is an Animage proprietary and fully automated system that controls the breathing of an animal during active scanning using a Hallowell Ventilator thereby removing artifacts due to motion.

It is estimated that up to 75% of all non-diagnostic scans are the direct result of motion artifacts.

The **FIDEX** system incorporates not only standard MPR and MIP slices and slab visualization, but also the latest available volume rendering filters for optimum 3D visualization. These configurable visualization modes offer powerful ways to facilitate the accurate mapping and planning of surgical procedures.



DR of the leg, 17" x 17".

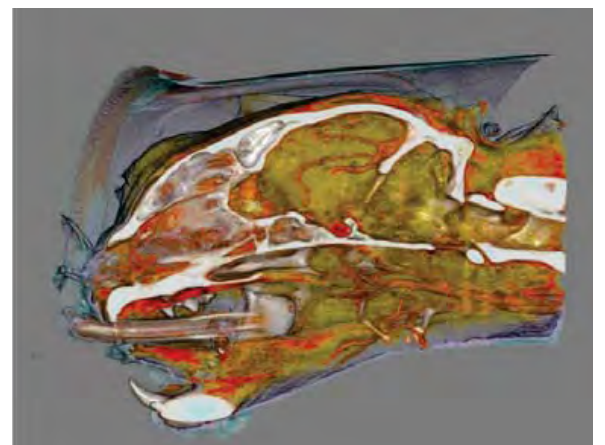
Image Quality

FIDEX state of the art image quality resolves detail below 0.15mm in radiography and fluoroscopy, and down to 0.2mm in CT, which is better than standard human CT scanners.

DICOM Compliant

FIDEX enables quick and easy consultation with teleradiological service providers via one-click import and export of DICOM images. Furthermore, **FIDEX** is compatible with most radiology workstations and DICOM management software packages.

FIDEX offers the means to make your practice immensely more productive and profitable by adding advanced diagnostic imaging capabilities to your business. FIDEX can create opportunities for new revenue - ask us how!



CT volume rendering of brain with contrast.

To learn more about *FIDEX* and its advantages, please contact us at:

Web www.animage.com

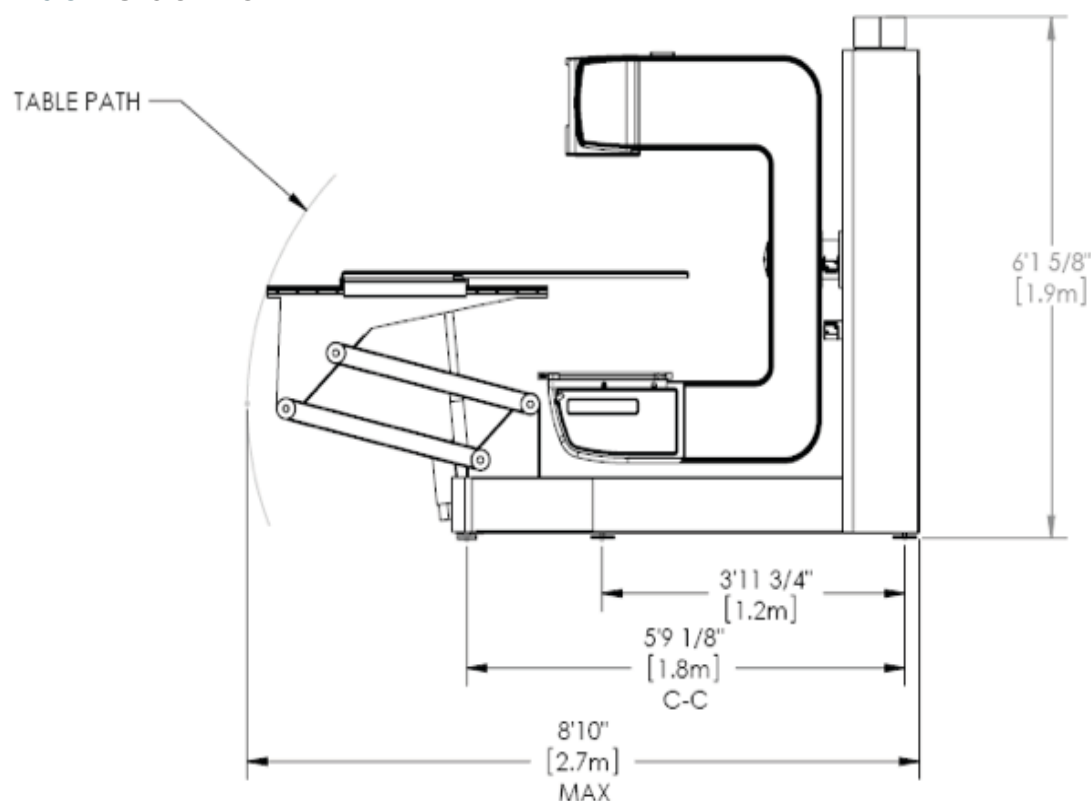
Phone 925-416-1900 x121

Sales Stephen Della Ratta

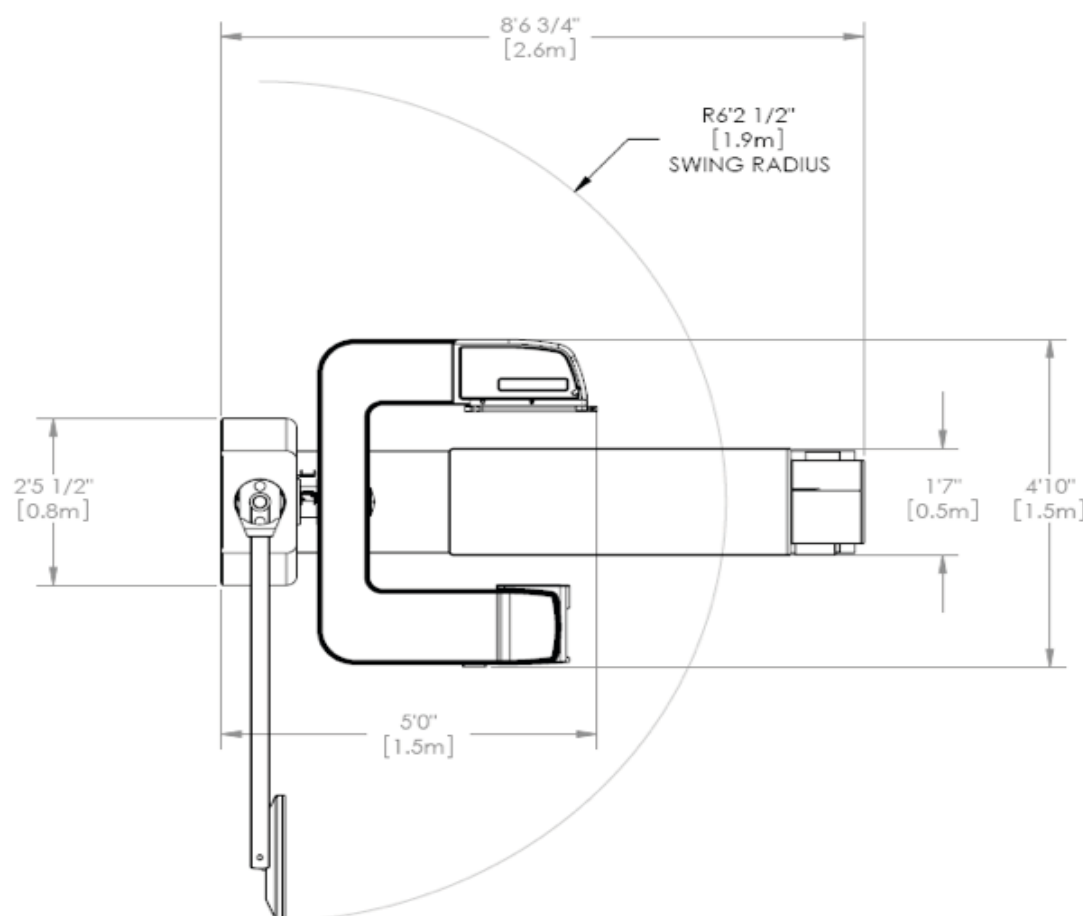
408-605-7628

sratta@animage.com

Fidex Side View



Fidex Top View



FIDEX-FS Specifications

Modalities

- ❖ Computed Tomography (CT) with up to 24cm x 72cm (9" x 28") scan size
- ❖ One-Shot Digital Radiography (DR), optional large full-floating table
- ❖ High quality fluoroscopy (FL): 5 to 45 frames per second, real-time display, AVI storage, and DSA capability

Hardware

- ❖ X-ray source: 60-120 kV, up to 120mA
- ❖ Detector: 43cm x 43cm (17" x 17")
- ❖ Patient table motorized up/down, in/out
- ❖ Open C-arm design
- ❖ Optional adjustable boom-mounted monitor (standard with FL)
- ❖ Power requirements (50Hz-60Hz)
Scanner: 220V
Workstation: 110V or 220V

Software

- ❖ DICOM-3 compliant throughout
- ❖ Optional add-on workstation for in-office viewing software
- ❖ Ultra fast volume CT image reconstruction using Exxim Computing Corporation's market leading COBRA algorithms
- ❖ Animage proprietary GUI for veterinary applications. Provides data base access, scan control, evaluation, storage and export
- ❖ Image visualization of slices: orthogonal or oblique planes, slabs, MPR, MIP
- ❖ Integrated 3D volume rendering



5165 Johnson Drive, Pleasanton, California 94588 ♦ 925.416.1900

Corporate

Animage, LLC (www.animage.com), founded in 2008 to bring advanced imaging products into the veterinary market, is a subsidiary of Exxim Computing Corporation (www.exxim-cc.com) of Pleasanton, Ca. Exxim is a specialist in 3D imaging, with products for tomographic image reconstruction and 3D visualization for medical and NDT applications. Exxim is privately held.